



---

# REQUEST FOR PROPOSAL

---

## Tree Forward: Implementation of the Philly Tree Plan

DISTRIBUTION DATE: January 10<sup>th</sup>, 2025

SUBMISSION DATE: February 3<sup>rd</sup>, 2025

JANUARY 10, 2025

PUBLIC HEALTH MANAGEMENT CORPORATION  
1500 Market Street, Philadelphia, PA 19102

## Table of Contents

### 1. **INTRODUCTION**

[1.1 PHMC Profile](#)

[1.2 Purpose](#)

[1.3 Contacting Us](#)

[1.4 Feedback about this RFP](#)

[1.5 Funding Acknowledgement](#)

### 2. **THE OPPORTUNITY**

[2.1 Background & Overview](#)

[2.2 Eligibility](#)

[2.3 Review Criteria](#)

[2.4 Key Dates](#)

[2.5 Terms and Conditions](#)

### 3. **SCOPE OF PROJECT**

[3.1 Project Description](#)

[3.2 Performance Metrics, Contract Management, & Payments](#)

### 4. **INSTRUCTIONS TO SUBMIT PROPOSALS**

[4.1 What Must be Included](#)

[4.2 How to Submit Your Application](#)

## 1. INTRODUCTION

### 1.1 Public Health Management Corporation (PHMC) Profile

Public Health Management Corporation (PHMC) is a nonprofit Public Health institute that creates and sustains healthier communities. PHMC uses best practices and evidence-based guidelines to improve community health through direct service, partnership, innovation, policy, research, technical assistance, and a prepared workforce. With a family of subsidiaries and more than 3,000 employees, PHMC has served the Delaware Valley region since 1972.

### 1.2 Purpose

PHMC, in collaboration with its six Philly Tree Plan Partners, is seeking proposals from qualified community-based organizations for projects that align with the Philly Tree Plan. The successful applicant(s) will carry out maintenance or planting projects that ensure long-term sustainability of the urban forest in high-priority and underserved areas of Philadelphia.

### 1.3 Contacting Us

For technical assistance with the RFP, please contact Emily Beamer ([phillytreeplan@phmc.org](mailto:phillytreeplan@phmc.org)). Technical assistance requests will be accepted and addressed on a rolling basis through January 28<sup>th</sup>. Please allow for two (2) business days to receive a response to your technical assistance request.

An informational webinar will be held on **Friday, January 10<sup>th</sup>, from 1:00 – 2:30 pm EST**. The webinar will take place virtually over zoom. To register, click [here](#). A recording will be made available following the webinar.

Office hours will be hosted on the following days and times to provide support and answer questions regarding the RFP. Please pre-register for office hours using the links below.

- Wednesday, January 15<sup>th</sup>, 2025 – 3:00pm – 4:00pm EST – Register [here](#)
- Thursday, January 23<sup>rd</sup>, 2025 – 12:00pm – 1:00pm EST – Register [here](#)
- Tuesday, January 28<sup>th</sup>, 2025 – 4:00pm – 5:00pm EST – Register [here](#)

### 1.4 Feedback about this RFP

PHMC is committed to making the Tree Forward RFP process accessible and reducing burden for applicants. As a newly established program and process, we are gathering feedback through a short form [here](#) to support our continuous improvement efforts.

We encourage you to share feedback so we can continue to refine the process and better meet applicant needs.

### 1.5 Funding Acknowledgement

Funding for this project is provided by the Inflation Reduction Act and the Forest Service, an agency of the U.S. Department of Agriculture (USDA), Urban and Community Forestry Program. USDA and PHMC are equal opportunity providers and employers.

---

	<u>100</u> % Federal - CFDA#: <u>10.727</u>	
	<u>      </u> % Commonwealth of PA	
<b>FUNDING SOURCE:</b>	<u>      </u> % City of Philadelphia	(“Funding Source Information”)
	<u>      </u> % Other	
	Source <u>USDA , Forest Service 24-DG-11094200-055</u>	

---

*This is an acknowledgement that the above financial assistance source(s) will be used to fund all or a portion of the Project. The Award Recipient will comply with all applicable Federal, State and Local law, regulations, executive orders, policies, procedures, and directives.*

---

*Please note, funding granted through this RFP is contingent upon the continued availability of federal funding from the U.S. Department of Agriculture (USDA). In the event of funding reductions, delays, or discontinuation by the USDA, PHMC reserves the right to modify, reduce, or withdraw awarded funds accordingly.*

## 2. THE OPPORTUNITY

### 2.1 Background & Overview

#### Philly Tree Plan Overview

The Philly Tree Plan is a 10-year strategic plan for the equitable growth and care of Philadelphia’s urban forest. Philadelphia Parks & Recreation spearheaded the development of the Philly Tree Plan over 6 years, engaging 9,000 residents and 40 stakeholder groups to deliver a strategy to realize a healthy and equitable tree canopy focused on seven high priority areas in the city.

To view an executive summary of the Philly Tree Plan, click [here](#)

To view the full Philly Tree Plan, click [here](#)

To view other information on the Philly Tree Plan, click [here](#)

Earlier in 2024, the U.S. Department of Agriculture (USDA) awarded funding to PHMC and its six partner organizations – Philadelphia Parks and Recreation (PPR), Pennsylvania Horticultural Society (PHS), Fairmount Park Conservancy (FPC),

PowerCorpsPHL (PCPHL), the School District of Philadelphia (the District), and Sustainable Business Network of Greater Philadelphia (SBN) – to support implementation of the Philly Tree Plan over the next 5 years. The three key elements of the USDA funding are 1) partner organizations scale up existing successful urban forestry programs in disadvantaged communities, 2) create the Philly Tree Coalition, a centralized entity to lead Philly Tree Plan implementation in conjunction with partner organizations and community members, and 3) **create Tree Forward**, a sub-grant program supporting community-based organizations to expand and maintain the urban forest in priority communities in Philadelphia.

The Tree Forward sub-grant program will seek proposals from community-based organizations on a **yearly basis** (*\*contingent on continued funding*). Due to a limited funding window in the current cycle, this RFP is seeking proposals for **maintenance-focused projects that can be completed in 3-month timeframe** (April 2025 – June 2025). In future funding cycles, the scope of the RFP will broaden to include projects targeting other goals and priorities from the Philly Tree Plan that can be completed over a longer time-period.

### **Overview of planting and maintenance-focused recommendations from the Philly Tree Plan**

- Reduce the burden of trees on residents by:
  - Addressing street tree pruning and removal requests, starting in priority areas
  - Prioritizing street tree maintenance on commercial corridors
  - Creating tree care and support programs for residents
  - Assisting with pruning and removal of hazardous trees on private property
  - Exploring options for removing young invasive trees

The following excerpts from the Philly Tree Plan illustrate the intended goals for short-term maintenance and planting-focused activities.

### **Excerpts from the Philly Tree Plan Goal 3 (Grow the urban forest equitable across the city) and Goal 4 (Reduce the burden of trees on residents)**

#### **3.5 Prioritize establishment care of newly planted trees**

- Providing consistent care for newly planted trees during the first three to five years, known as the establishment period, dramatically increases their chance of reaching maturity. Establishment care can be challenging, especially in places like parks that do not always have easy access to water. Philadelphia Water Department provides ongoing maintenance for the trees they plant in their green stormwater infrastructure installations, and Philadelphia Parks & Recreation tree planting contracts include follow-up care and a warranty for the

first year. But after the first year, and for all trees planted through non-profit groups, street and park tree establishment care activities are performed by residents and volunteers like Park Friends groups and Pennsylvania Horticultural Society Tree Tenders groups.

The City and non-profit partners should coordinate and expand requirements and programs for establishment tree care to protect investments in trees

### **3.6 Prioritize large-scale street tree planting**

#### **3.6a Organize tree planting for entire residential blocks**

- The newly-created “Philadelphia Street Tree Opportunity Map” (see appendix, page 99 of the PTP) could be used to identify blocks that are high priority and have the space for large-scale street tree planting, but residents should lead the effort to decide which blocks are chosen. The City and nonprofit partners like the Pennsylvania Horticultural Society, whose network of Tree Tender leaders exists for the purpose of organizing neighbors around tree-planting, should support residents in organizing their neighbors, including support for renters to advocate for street tree planting where they live.

### **4.2 Create tree care and support programs for residents**

#### **4.2c Assist with pruning and removal of hazardous trees on private property**

- Trees that are poorly maintained or growing in the wrong spot can sometimes pose a hazard to residents and neighbors of the property they are growing on. This includes trees in alleys, abandoned yards, and unmaintained vacant lots. Residents with dangerous trees often face an emergency with a hefty price tag and a lack of support options. The City should explore setting aside money from the Tree Fund (see 3.2) to support residents in an emergency, especially in priority areas (see 1.2). Funds could be used to prune or remove trees that are impacting the quality of life and public safety on private property for eligible residents, based on income.

*Note: Removal of trees **must only be conducted** when, by doing so, the conditions improve for disadvantaged communities and the trees removed are replaced at a rate of at least 1:1. The following best practices must be followed when trees are removed: trees will not be removed if trees are providing substantial benefits and minimal risk to public safety and urban forest health and trees will only be removed if they are in a condition that causes more harm than good to the community. Examples include dead, standing trees and trees rated by a Tree Risk Assessment Qualified professional as “extreme” or “high” risk of failure, whereby the only acceptable mitigation option for reducing tree risk to an acceptable level is whole tree*

removal. The level of risk will be assessed using the International Society of Arboriculture tree risk assessment method. [Please see project requirements for more information.](#)

#### **4.2d Assist with the removal of small conflicts to make space for new trees**

- Not all locations are appropriate for a new street tree. Sometimes there are space limitations like narrow sidewalks, utilities, or street signs that prevent a tree from being planted. But sometimes there are more easily fixable issues, like an old tree stump or a leftover metal tree grate, that can be removed to make space for a new tree. The City, the Pennsylvania Horticultural Society, and other partners should coordinate and explore state, federal, corporate or foundation funding sources to assist residents in removing these smaller conflicts to make space for more trees along our city streets.

#### **4.2e Explore options for removing young invasive trees**

- Many plants that cause the most burden to residents and our ecosystem are invasive species, meaning that they spread, multiply, and grow so quickly they can become costly to remove in only a few years.

They can quickly invade natural areas, parks, and private property and are often found growing out of cracks in sidewalks and buildings. An Ailanthus tree (Tree of Heaven, one of the most invasive trees in the city) can produce approximately 10 million seeds by the time it is 40 years old! In addition to reproducing rapidly, trees such as Ailanthus are allelopathic, meaning they produce a chemical that prevents the seeds of other species from growing. Many residents have invasive trees growing on their property or in adjacent alleys that threaten their homes, but that they cannot afford to remove.

Removal of young invasive tree species requires minimal training and equipment and offers an opportunity for local employment. The City should identify and collaborate with partners such as the Pennsylvania Horticultural Society to provide education to increase residents' awareness and identification skills so they can remove invasive trees from their property before they become a threat. Support for removal of young invasive trees should also be included in yard tree support programs (see 4.2.a) and community-based tree care programs (see 5.1.a).

## **2.2 Eligibility**

Applicants must be recognized by the Internal Revenue Service as 501(c)3 or state non-profit organization. State non-profits or 501(c)3 organizations include community-based organizations, schools and educational institutions, and other types of public-serving groups. Government entities are also eligible to apply.

### 2.3 Review Criteria

Proposals will be evaluated based on the following criteria and receive a score out of 100 points:

- **Technical Expertise:** Creativity and effectiveness of proposed concepts. (25 points)
- **Experience:** Relevance and quality of past projects in the environmental or tree maintenance field. (25 points)
- **Organizational Capacity and Qualifications:** Expertise and qualifications of the organization and key personnel assigned to the project. (10 points)
- **Cost:** Competitiveness of pricing and value offered relative to the scope of work. (15 points)
- **Compliance:** Adherence to instructions and requirements. (15 points)
- **Geography:** Project location relative to Philly Tree Plan priority neighborhoods (10 points)

***Note:** Additional priority will be given to applicants who represent a Minority Business Enterprise (MBE), Women's Business Enterprise (WBE), Disabled Business Enterprise (DBE), Veteran-Owned Small Business or Local Business Entity (LBE).*

### 2.4 Key Dates

<b>RFP Posted</b>	Friday, January 10 <sup>th</sup> , 2025
<b>Informational Webinar</b>	Friday, January 10 <sup>th</sup> , 2025 1:00 - 2:30pm EST
<b>Office Hours</b>	Wednesday, January 15 <sup>th</sup> , 2025 – 3:00 – 4:00pm EST Thursday, January 23 <sup>rd</sup> , 2025 – 12:00 – 1:00pm EST Tuesday, January 28 <sup>th</sup> , 2025 – 4:00 – 5:00pm EST
<b>Proposals Due</b>	Monday, February 3 <sup>rd</sup> , 2025 9am EST
<b>30-minute calls with applicants</b>	Week of February 21 <sup>st</sup> , 2025
<b>Applicant Selection</b>	By February 28 <sup>th</sup> , 2025
<b>Contract Processing</b>	February 28 <sup>th</sup> , 2025 – March 31 <sup>st</sup> , 2025
<b>Commencement of Work</b>	April 1 <sup>st</sup> , 2025
<b>Completion of Work &amp; Final Deliverables Due Date</b>	June 30 <sup>th</sup> , 2025



## 2.5 Terms and Conditions

PHMC has the right to evaluate proposals and negotiate on price, terms and other attachments contained within this RFP or future contractual requirements.

As stated above, Funding for this project is provided by the Inflation Reduction Act and the Forest Service, Urban and Community Forestry Program. In compliance with the funding source, award recipients will affirm and certify certain regulations which will be shared after award notification. For questions, please reach out to Emily Beamer ([phillytreeplan@phmc.org](mailto:phillytreeplan@phmc.org)).

## 3. SCOPE OF PROJECT

### 3.1 Project Description

Applicants should read this section closely. An Applicant's proposed scope of work must detail how they will meet the project requirements and outcome goals described in this section.

#### Project Outcome Goal (s)

- Tree maintenance (pruning, removal, care of newly planted trees, etc.)
- Tree planting

#### Project Requirements

Through the Tree Forward Sub-Grant Program, PHMC has **\$150,000 available to advance maintenance and planting projects through this RFP**. This amount will be split between awarded projects. We anticipate awards will range from \$5,000-\$15,000. The grant amount requested may be greater than \$15,000 but should be commensurate with the proposed project scope and must be able to be spent within the three-month grant period (April 1, 2025 – June 30, 2025). The grant amount requested must be at least \$5,000.

- **Tree Planting, Care, and Maintenance:**
  - Address 1 or more maintenance or planting priorities described [above](#) from the Philly Tree Plan, prioritizing neighborhoods with a high need for tree

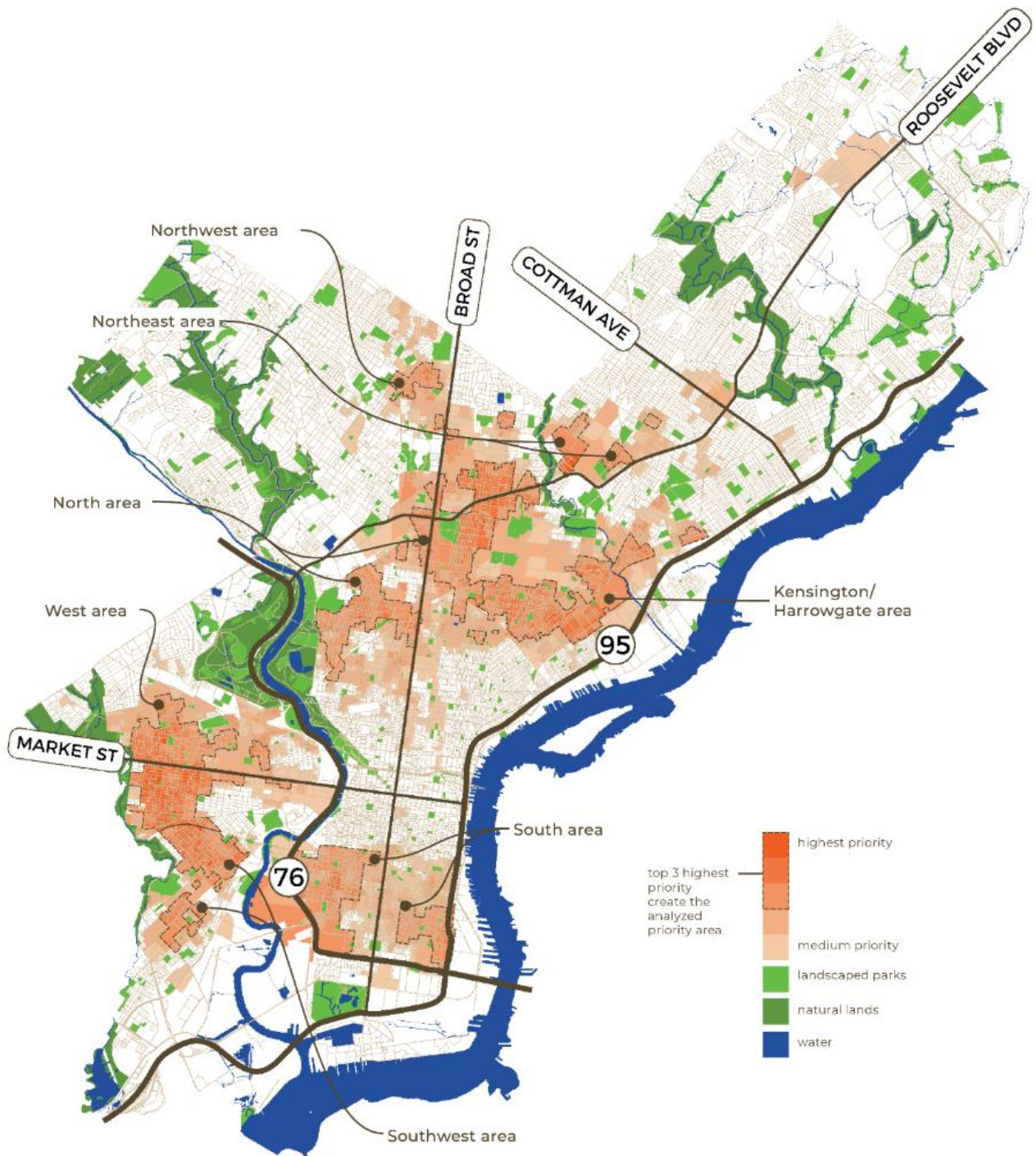
removal and care, high vulnerability to extreme heat, and those that have experienced decades of disinvestment. \*

- **Community Outreach and Engagement:**
  - Engage (or show evidence of previously engaging) community members in the planning and prioritization of tree care and maintenance.
  - Provide updates to community members residing in locations where work is performed.
  
- **Timeframe**
  - Projects must be completed in a 3-month timeframe (April 1, 2025 – June 30, 2025).
  
- **Geography**
  - Projects should take place within the seven priority neighborhoods identified within the Philly Tree Plan. Per USDA funding requirements, the project area **must be included in at least one of the following tools:**
    - \*Disadvantaged area from the [Climate and Economic Justice Screening Tool \(CEJST\)](#)
    - [PA Environmental Justice Areas](#)
    - [PA Federal Opportunity Zones](#)

You can search for your project area(s) in any of the above maps. For questions or assistance identifying eligible project areas, please reach out to [phillytreeplan@phmc.org](mailto:phillytreeplan@phmc.org). Zoomed in map areas from the Philly Tree Plan can be found in Appendix I.

\*Orange areas from this map = approved census tracts

Figure 1. Philly Tree Plan Priority Map



\*Please note, if you are proposing hazardous tree removal, you must meet the following requirements:

- Trees will not be removed if trees are providing substantial benefits and minimal risk to public safety and urban forest health and trees will **only be removed** if they are in a condition that causes more harm than good to the community
- Trees removed must be replaced at a rate of 1:1. Replacement trees do not need to be in the exact same location, but should be as close as possible to where it was removed, taking site considerations and property owner support into account. **Replacement trees should be planted within the same zip code.** This is to help ensure that we're not taking canopy away from areas and not putting it back. Replacement trees must be planted within one year of removal. If you do not plan to plant the replacement tree within the project period, please describe your timeline and plans for replacing the tree.
- Trees must either be dead, standing trees **OR** rated by a Tree Risk Assessment Qualified (TRAQ) professional as "extreme" or "high" risk of failure, whereby the only acceptable mitigation option for reducing tree risk to an acceptable level is whole tree removal. The level of risk will be assessed using the International Society of Arboriculture tree risk assessment method.
  - [Click here for more information on TRAQ certification.](#) This is an optional certification arborists can get. If the tree is not a dead, standing tree, it must be rated by a TRAQ professional as "extreme" or "high" risk of failure

\*Please note, this funding **can not be used for equipment or vehicle purchase. If you include equipment or vehicles in your budget, it must be for a rental/lease.** All equipment requests must be less than \$5,000. These requirements are firm based on USDA guidelines for this funding.

### 3.2 Performance Metrics, Contract Management, & Payments

#### Performance Metrics

PHMC is interested in identifying metrics to monitor performance over the funding period, in alignment with the Philly Tree Plan and USDA evaluation reporting. PHMC has identified the following metrics and will work with the awarded organization(s) to add to or refine this list during contract negotiations. The final set of performance metrics and frequency of collection will be negotiated by each successful Applicant and PHMC prior to the finalization of an agreement between parties and may be adjusted as needed.

<b>Performance Metrics</b>
<i>Number of trees pruned</i>
<i>Number of hazard trees removed</i>

<i>Number of invasive trees removed</i>
<i>Number of trees treated for pests/disease</i>
<i>Number of trees maintained</i>
<i>Number of trees planted</i>
<i>Level of community participation &amp; input in project planning or implementation</i>
<i>Number of jobs supported/ Number of people engaged in the work</i>

## **Performance Monitoring**

As part of the PHMC’s commitment to improved outcomes, we seek to actively monitor project performance. Reliable and relevant data is necessary to drive service improvements, ensure compliance, inform trends to be monitored, and evaluate results and performance. As such, PHMC reserves the right to request/collect other key data and metrics from providers related to the performance of the funded project.

## **Payment and Reimbursement**

The contract for each selected applicant will include a contract maximum amount that cannot be exceeded without a written contract amendment. **The contracts will operate on a cost-reimbursement model, where selected applicants will be required to pay for costs and submit invoices to be reimbursed.** Selected applicants will be asked to submit estimates for the distribution of award spending across April, May, and June to help us process your invoices and payments during the grant period more efficiently. Accurate estimates will allow PHMC to pay awardees within 40 days of receiving invoices. If spending is higher than estimates, reimbursements may take up to 75 days. Applicants must provide a detailed budget, with a line-item breakdown of the costs for specific services and work products proposed. Additional budget requirements are included below. Any contract resulting from this RFP will provide a not-to-exceed amount in the compensation section of the contract.

*Please note, funding granted through this RFP is contingent upon the continued availability of federal funding from the U.S. Department of Agriculture (USDA). In the event of funding reductions, delays, or discontinuation by the USDA, PHMC reserves the right to modify, reduce, or withdraw awarded funds accordingly.*

## **4. INSTRUCTIONS TO SUBMIT PROPOSALS**

### **4.1 What Must be Included**

## 1. Introduction/Executive Summary

- Provide a brief overview of your organization and project

## 2. Company Information

Provide a description of your organization. Please include:

- Organization address
- Geographic Service area
- Number of years organization has been in business
- Parent company name and address (if any)
- Number of Employees
- 501(c)3 or State Non-profit supporting documentation. We will accept any of the following:
  - A copy of a current tax exemption certificate from the IRS.
  - A letter from your state's tax department, attorney general, or another state official saying that your group is a nonprofit and that none of your net earnings go to private shareholders or others.
  - A certified copy of your certificate of incorporation. This document must show that your group is a nonprofit.
  - Any of the above for a parent organization. Also include a statement signed by an official of the parent group that your organization is a nonprofit affiliate.
- 990 Tax Document or equivalent Tax document for the type of organization (from 2023)
- Audited Financial Statement FY23 – this is only necessary if the tax document shows annual contribution more than \$100,000.
- **Business Designation:** Please state whether your company is designated as a Minority Business Enterprise (MBE), Women's Business Enterprise (WBE), Disabled Business Enterprise (DBE) certification/designation, Veteran-Owned Small Business or Local Business Entity (LBE)
  - If you hold any such designation, please provide evidence of such designation or certification.

*PHMC will allow organizations to use a fiscal sponsor. If you are applying with a fiscal sponsor, please note this and also include their information in this section. If selected, the fiscal sponsor will be listed on contract documents with PHMC, but all work must be done by the sponsored organization.*

### **Note on Supplier Diversity**

PHMC has had a long-standing commitment to supplier diversity and the impact it can have on the communities we serve. This work is a critical component of PHMC's Diversity, Equity, and Inclusion strategy. PHMC's size and scope provides opportunity to enhance systemic change across our region while delivering broader and deeper benefits across our communities. PHMC strives to deliver a rich and robust supplier diversity program promoting innovation, expanding the organization's procurement channels, and creating competition.

PHMC is committed to ensuring that a Disadvantaged Business Enterprise ("DBE") or Small Business Enterprise ("SBE") located within our region, or who support the communities we serve, receive access to opportunities generated by PHMC to provide products and/or services. PHMC's goal is to strengthen the ties with the communities PHMC serves by creating mutually beneficial business relationships leading to growth within the surrounding community.

### **3. Contact Information**

Please provide the following for the Applicant's primary contact:

- Name
- Job Title
- Telephone Number
- Email Address

### **4. Proposed scope of work**

Review Section 3 of this RFP, "[Scope of Project](#)" and directly state what services and materials you will provide to meet the described needs. Be specific, and, as necessary, describe your services and materials in plain language for the evaluation team to understand. **Your scope of work should be 5 pages or less.** Please include the following:

- **Project Description:** Provide an overview of the project (who, what, when, where, why, and/or how).

- **Services to be Provided:** Provide a list of deliverables, roles, and responsibilities, etc. over the course of the project. This can also include a timeline indicating when each deliverable will be completed.
- **Itemized Budget and Payment Conditions:** State the proposed amount PHMC will pay and any other particulars regarding payment. An itemized budget breakdown must be included using the **template provided [here](#)**. *(Note: The budget template linked above is a read-only version. To edit and add your organization's information, please download (or copy) and save it.)*

Budgets must be “fixed price” proposals. The proposed budget must include all costs that will be charged to PHMC for the project the Applicant proposes to perform, including, but not limited to, costs for the following, if the Department is to pay for them: employee compensation and fringe benefits; subcontracts for specific, short-term work; stipends; program supplies; travel expenses (reimbursable only at rates approved by [USDA](#)); other costs; and indirect costs.

## **5. Statement of Qualifications & Relevant Experience**

Provide a statement of your relevant qualifications and demonstrate how your experience meets or exceeds PHMC's requirements. Include a list and description of similar projects you have worked on, including the number of such projects, brief descriptions of project outcomes, and the amount of time spent on each project.

## **6. Certificate of Insurance**

Please submit a Certificate of Insurance (COI). This is required by our legal department to comply with legal and regulatory requirements. A template is linked [here](#). PHMC should be listed in the lower left as a certificate holder as follows:

Public Health Management Corporation  
Centre Square East, LM 500  
1500 Market Street  
Philadelphia, PA 19102

## **7. Completed W-9 Form**

Please complete the W-9 form linked [here](#). Submitting this with your proposal will support expedited contract processing if your project is selected. This form requests



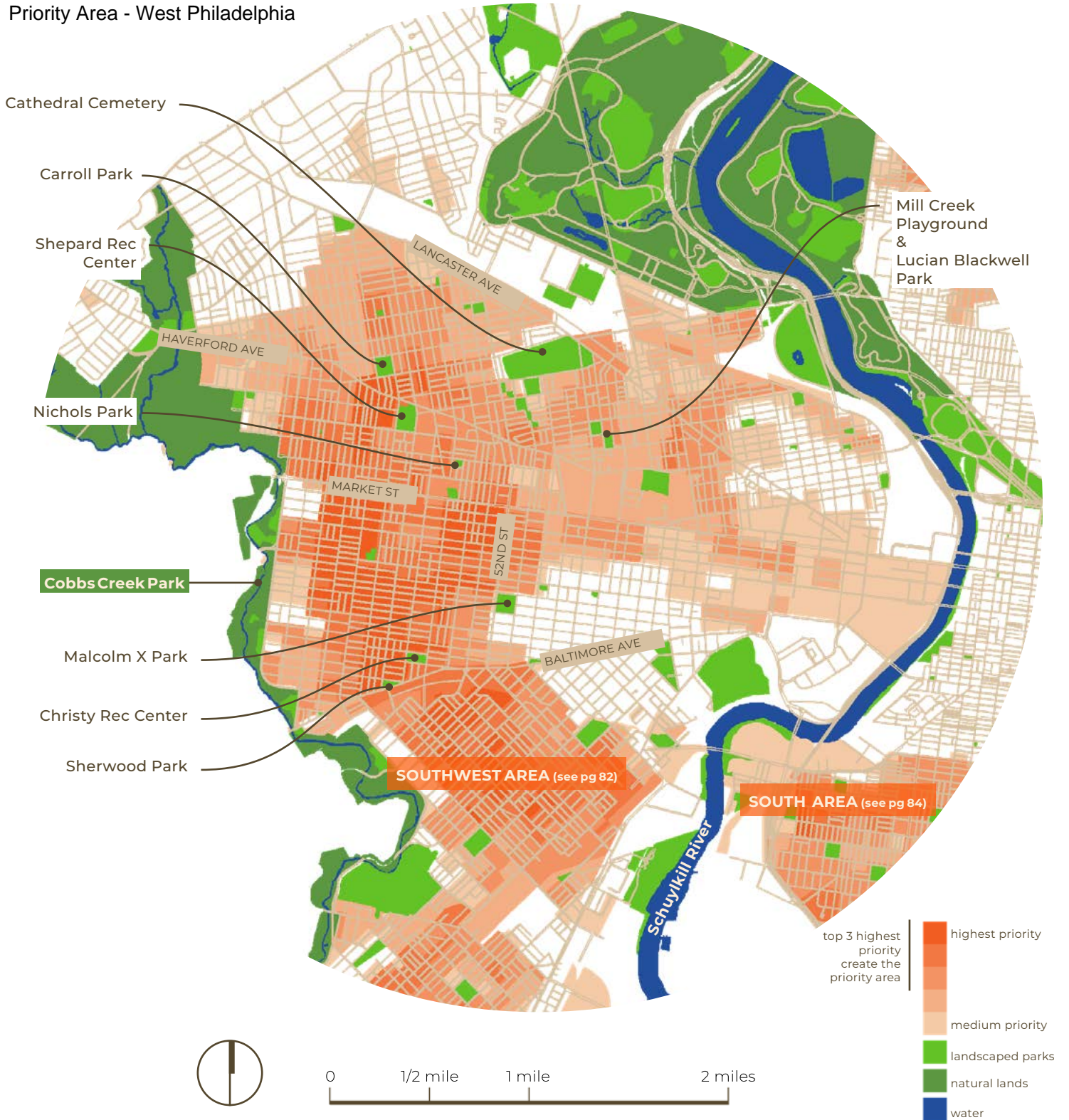
your organization's name, address, and taxpayer identification information. The form will be used by PHMC's Accounts Payable department to generate a vendor profile if your proposal is selected.

*Additional materials will be requested after final selection of awardees to aid in the setup of awardees as vendors in PHMC's system.*

## **4.2 How to Submit Your Application**

Completed and signed proposals should be submitted through this [online Google form](#) no later than 9:00AM EST on Monday, February 3<sup>rd</sup> 2025. You will need a google account to access the submission form. By completing this form while signed into your Google account, your work will be automatically saved. You can return to complete the form any time before the deadline by accessing the form link. Please address questions about this RFP to Emily Beamer, [phillytreeplan@phmc.org](mailto:phillytreeplan@phmc.org) by 5:00pm on Tuesday, January 28<sup>th</sup>, 2025. Documents must be uploaded to the [form](#) in PDF format. The budget should be saved and uploaded in Microsoft Excel format.

Priority Area - West Philadelphia



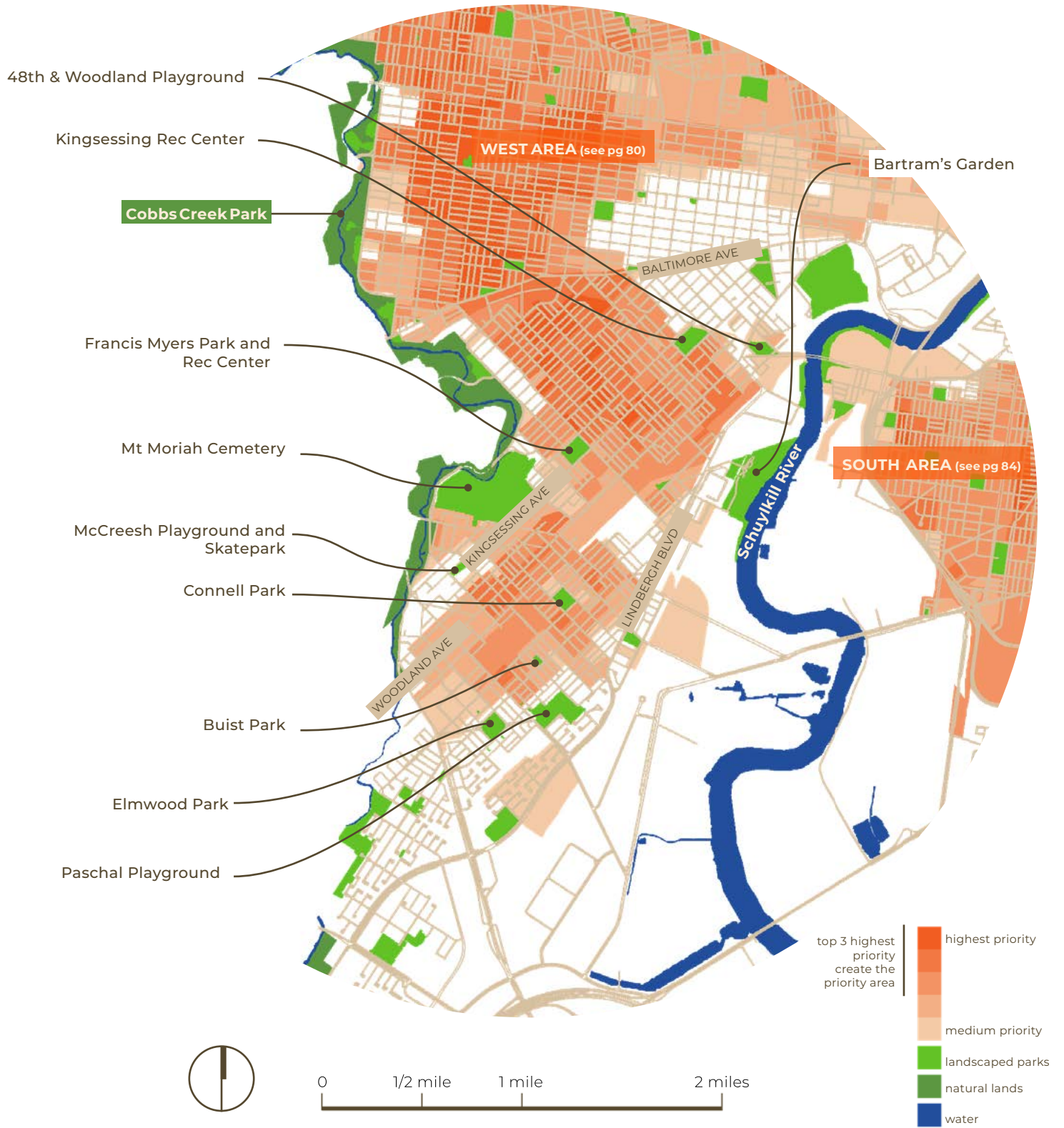
Schools

- Andrew Hamilton School
- Boys Latin Charter Middle School
- Commodore Barry Elementary School
- Holmes School
- John P. Turner Middle School
- KIPP West Phila Prep Charter School

- Mastery Charter School Harrity Elementary
- Sayre Junior High School
- Tilden Middle School
- Universal Bluford Charter School
- Universal Daroff Charter School
- W. C. Bryant Promise Academy

- W.C. Longstreth Elementary School
- West Philadelphia Achievement Charter Elementary School

# Priority Area - Southwest Philadelphia



- 48th & Woodland Playground
- Kingsessing Rec Center
- Cobbs Creek Park**
- Francis Myers Park and Rec Center
- Mt Moriah Cemetery
- McCreesh Playground and Skatepark
- Connell Park
- Buist Park
- Elmwood Park
- Paschal Playground

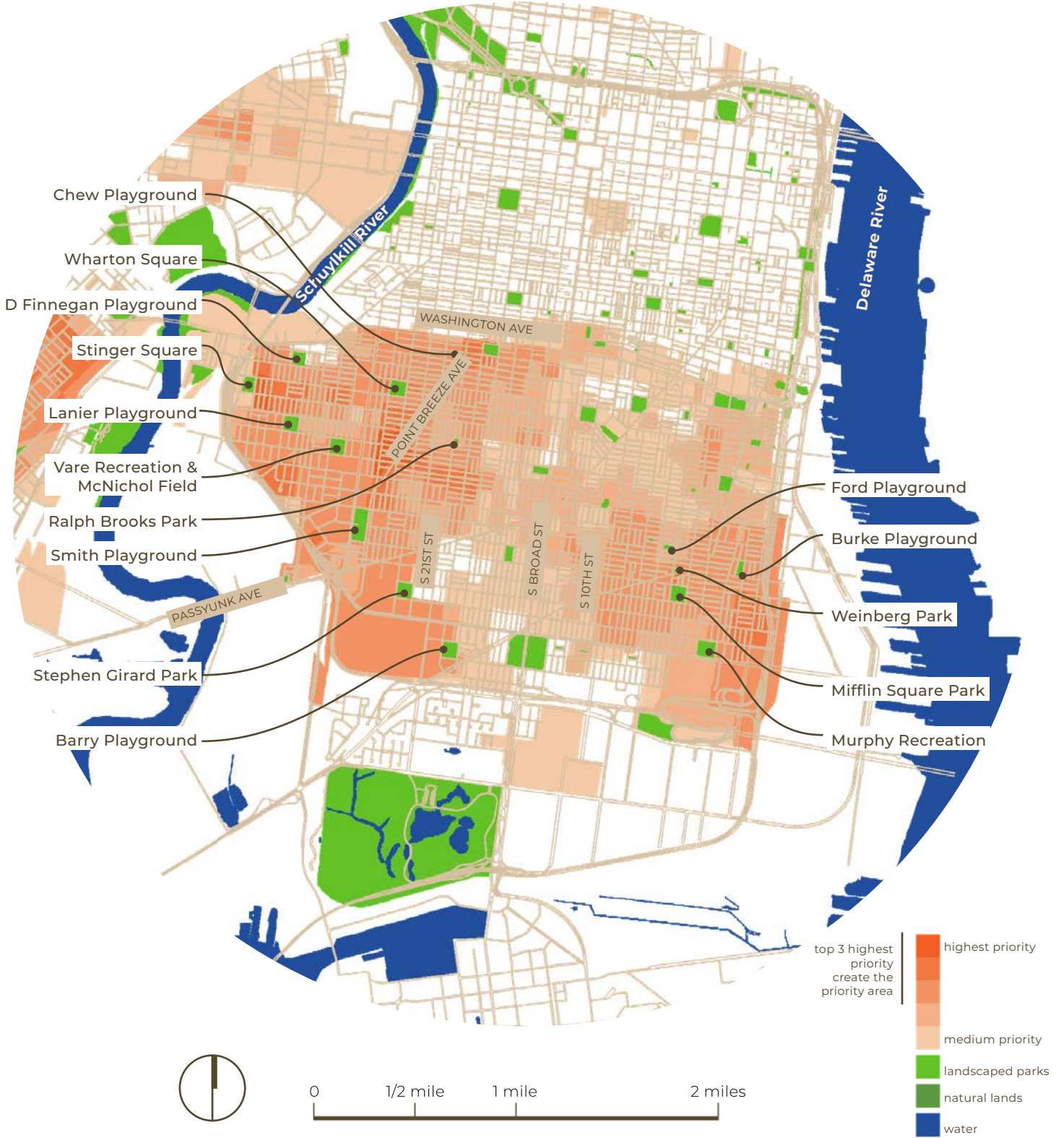
Bartram's Garden

SOUTH AREA (see pg 84)

- Schools**
- John M. Patterson Elementary School
  - Stages Community School
  - Thomas G. Morton Elementary School
  - Tilden Middle School



# Priority Area - South Philadelphia



## Schools

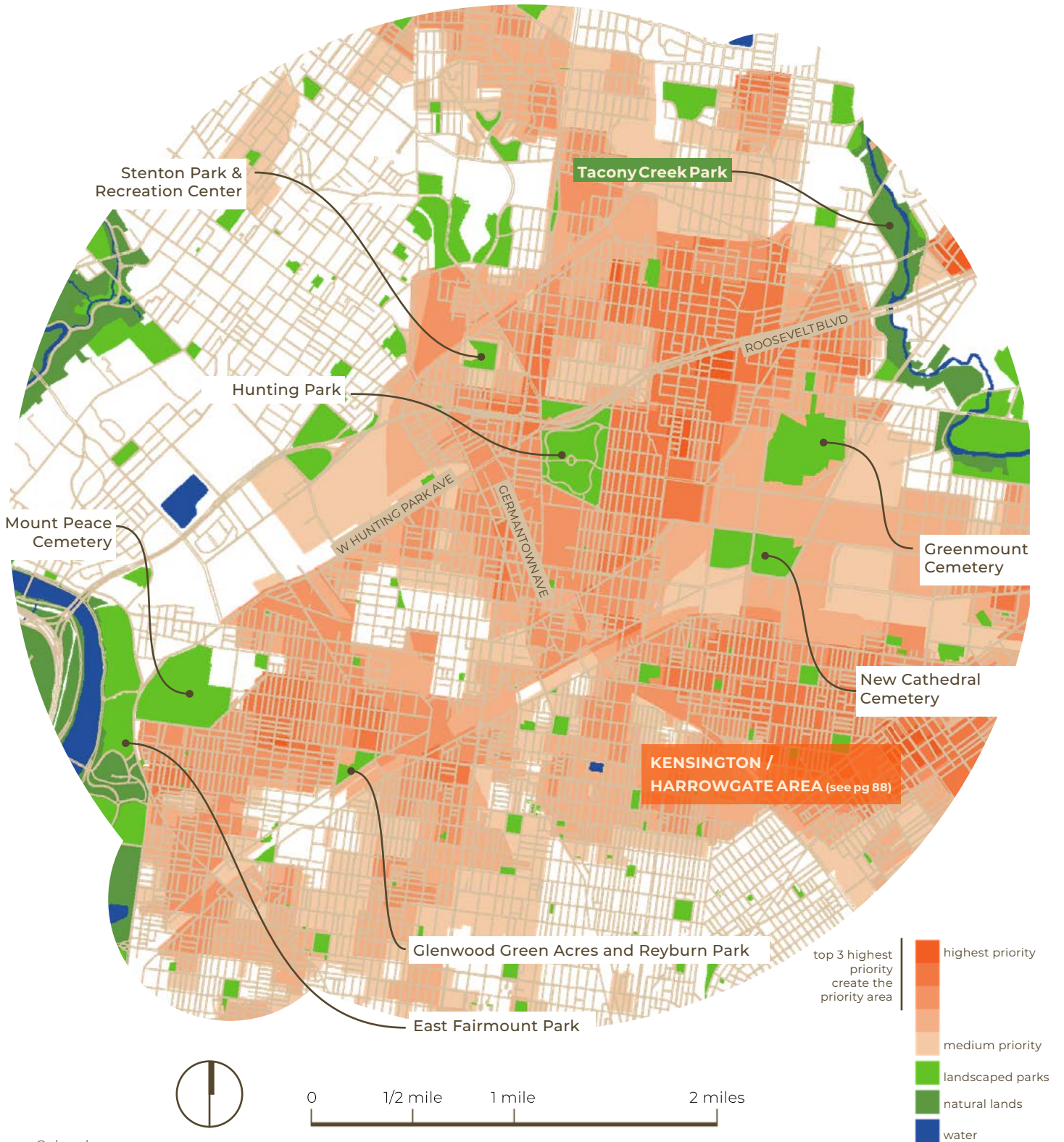
Charles Y. Audenried High School  
 Children's School  
 Delaphine McDaniel School  
 Francis Scott Key School  
 Furness High School

G.W Childs Elementary School  
 George W. Sharswood  
 Girard Academic Music Program  
 John H. Taggart  
 Mitchell Elementary Middle School

Preparatory Charter School  
 Project P.L.A.Y. School  
 St. Gabriel School  
 Universal Audenried Charter School  
 Universal Vare Charter School



# Priority Area - North Philadelphia



**KENSINGTON / HARROWGATE AREA** (see pg 88)

- top 3 highest priority create the priority area
- highest priority
- medium priority
- landscaped parks
- natural lands
- water

### Schools

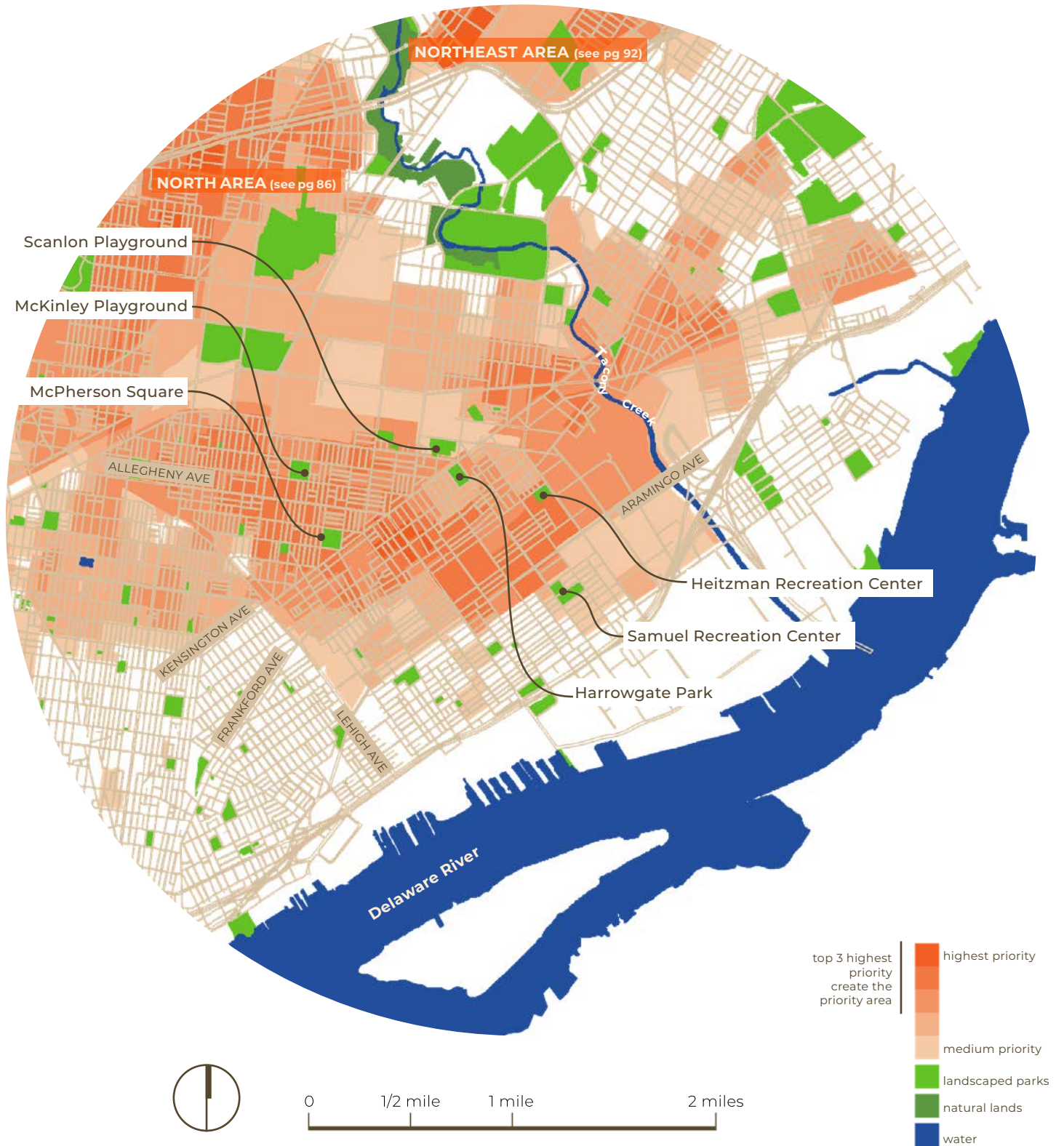
- Alexander K. McClure Elementary
- Andrew J. Morrison School
- ASPIRA, Inc. of Pennsylvania
- Bayard Taylor School
- Carson Valley School
- Cayuga Elementary School
- Cooke Junior High School
- Dr. Ethel D. Allen School
- Esperanza Cyber Charter School
- Grover Cleveland Mastery Charter School

- Harold O. Davis Christian School & Development Center
- Hunting Park Christian Academy
- Hunting Park Christian Academy
- Jay Cooke Elementary School
- KIPP Philadelphia Elementary Academy
- Lancaster Bible College
- Little Flower High School
- LOGAN Hope School
- Mary McLeod Bethune School
- Mastery Prep Elementary Charter School

- Multicultural Academy Charter School
- Munoz-Marin Luis Elementary School
- Potter-Thomas Elementary School
- Saint Henry's School
- St. Martin de Porres School
- Stages Community School
- Strawberry Mansion High School
- Timothy Academy
- TM Peirce School
- Vocation Career Prep School



Priority Area - Kensington/ Harrowgate



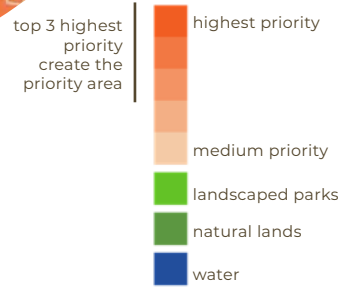
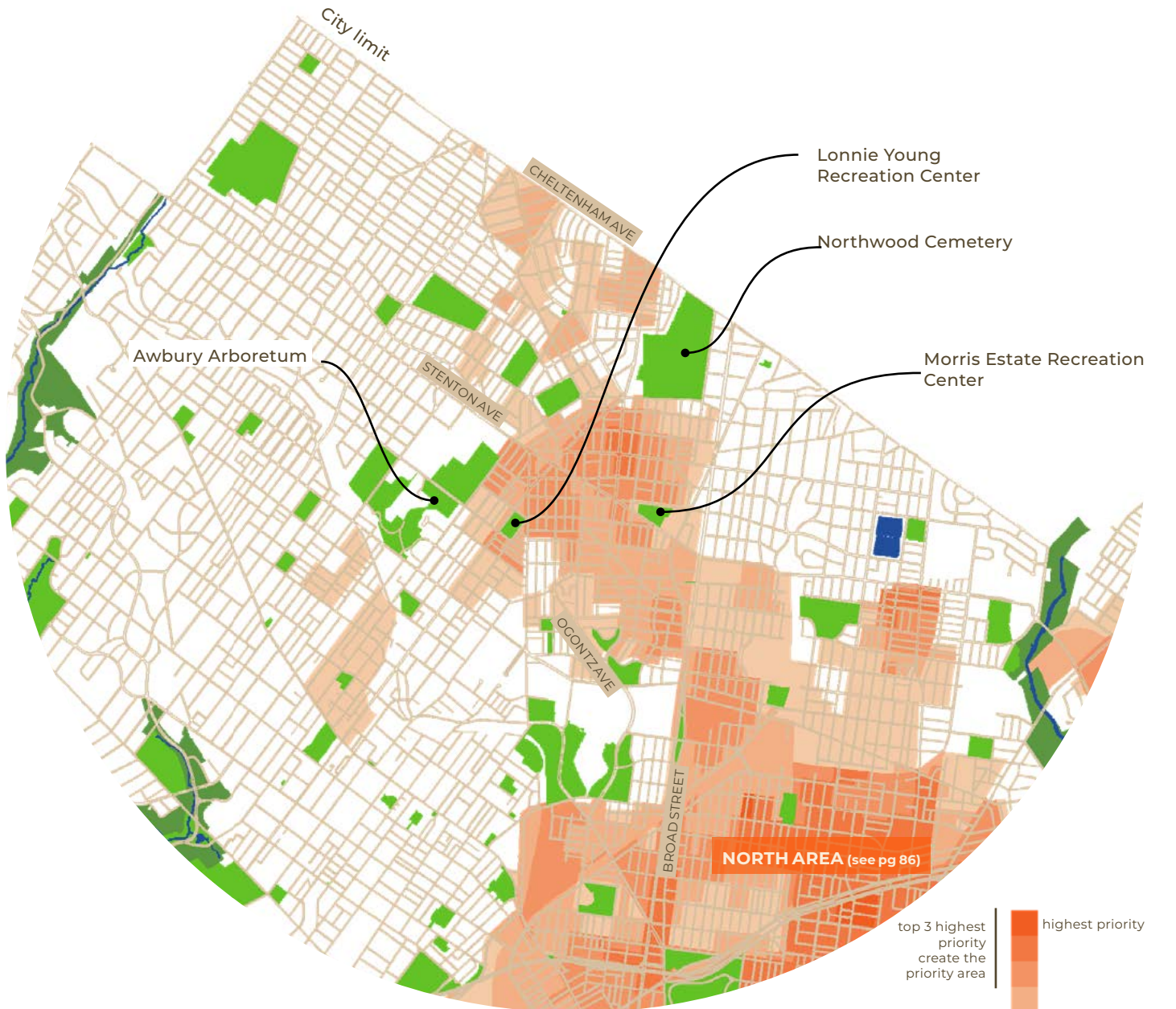
Schools

- Allen M. Stearne School
- Conwell Middle School
- Deep Roots Charter School
- Esperanza Academy Charter School
- Frances E. Willard Elementary School
- Franklin Town Charter School

- Hopkinson School
- Horn School
- John H. Webster School
- Jones Alternative School
- Lewis Elkin Elementary School
- NSCA Willard Annex

- Philip Sheridan School
- Powers School

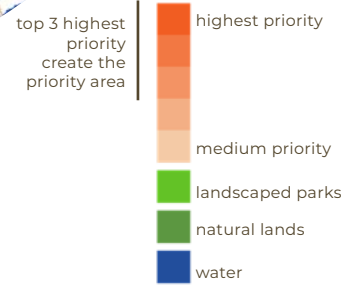
Priority Area - Northwest Philadelphia



Schools  
 John L. Kinsey School  
 Wagner Middle School



Priority Area - Northeast Philadelphia



Schools

- International Christian High School
- Samuel Fels High School
- Thomas Creighton School